

**EMBRY-RIDDLE**  
Aeronautical University.

Fitness Complex – Pre-Bid Meeting 08/21/20



# Agenda

---

## Pre-Bid Meeting Agenda:

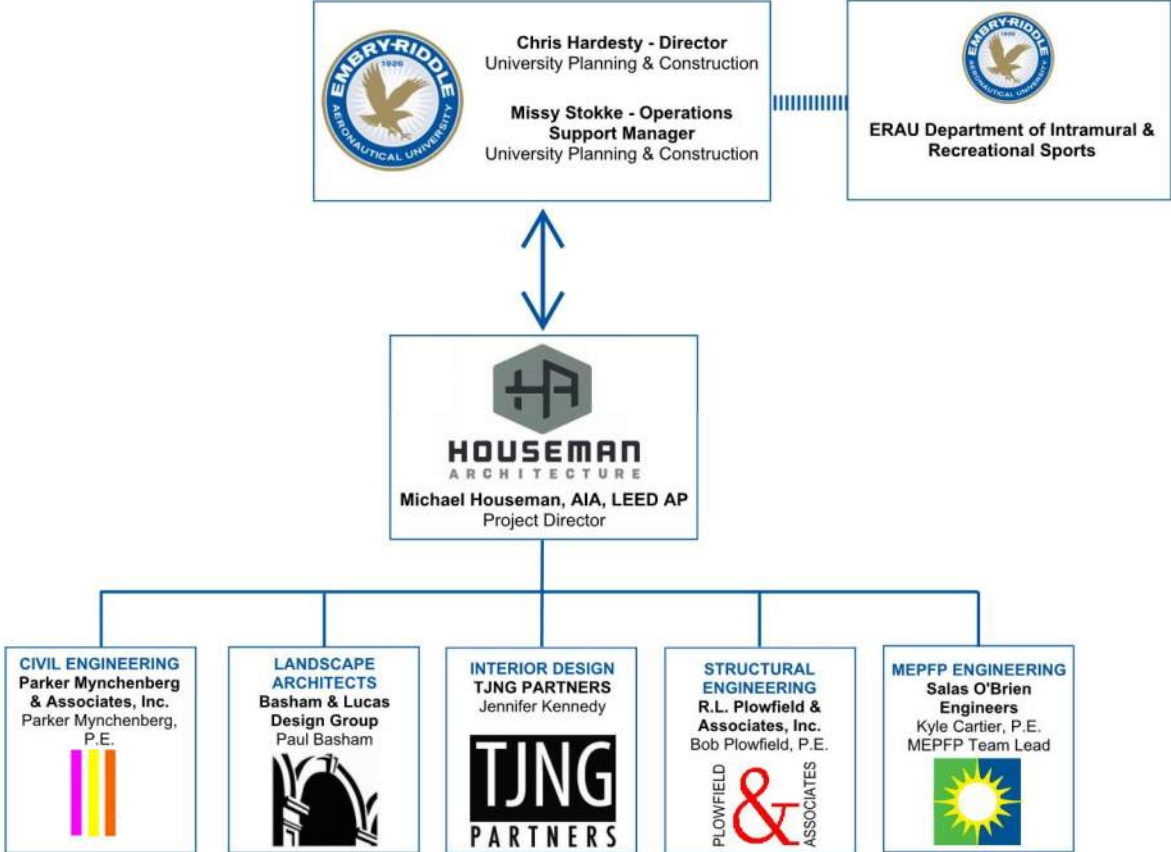
- Team Introductions
- Project Overview
- Schedule
- Bid Process
- Questions?



# Team Introductions

---

# Team Introductions



# Project Overview

---

# Project Overview

## Project Location

Prominent Site adjacent to Academic Quad

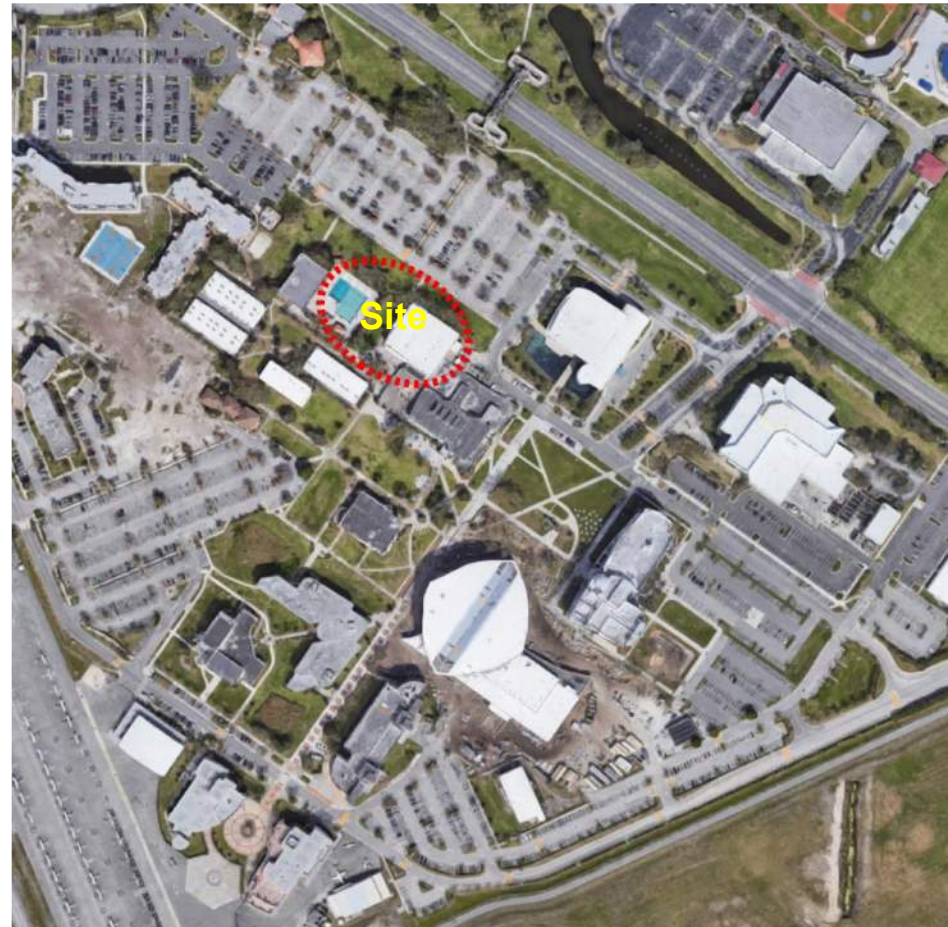
### Demolition of Annex Building

- Not included in your Bid

### Demolition of Pool & Pool Deck

- **Included** in your Bid
- Phase of this work at your discretion

### Protect the Existing Oak



# Project Overview

## Site Plan

### Pool:

- 6,000sf Swimming Pool
- Lap Swimming – 5 lap lanes
- NASA Deep End – 14ft
- Heated & Cooled Pool
- Recreation Zone:
  - Zero Entry
  - Sun Shelf
  - Volleyball Area

### Pool Pavilion:

### Existing Pump House:

- House to Remain – new finishes
- New Equipment
- New Equipment Yard

### Flex Lawn:

- Synthetic Turf – 8,000sf

### Resort Style:

- Nighttime Swimming
- Tree lighting
- EXISTING OAK TO REMAIN



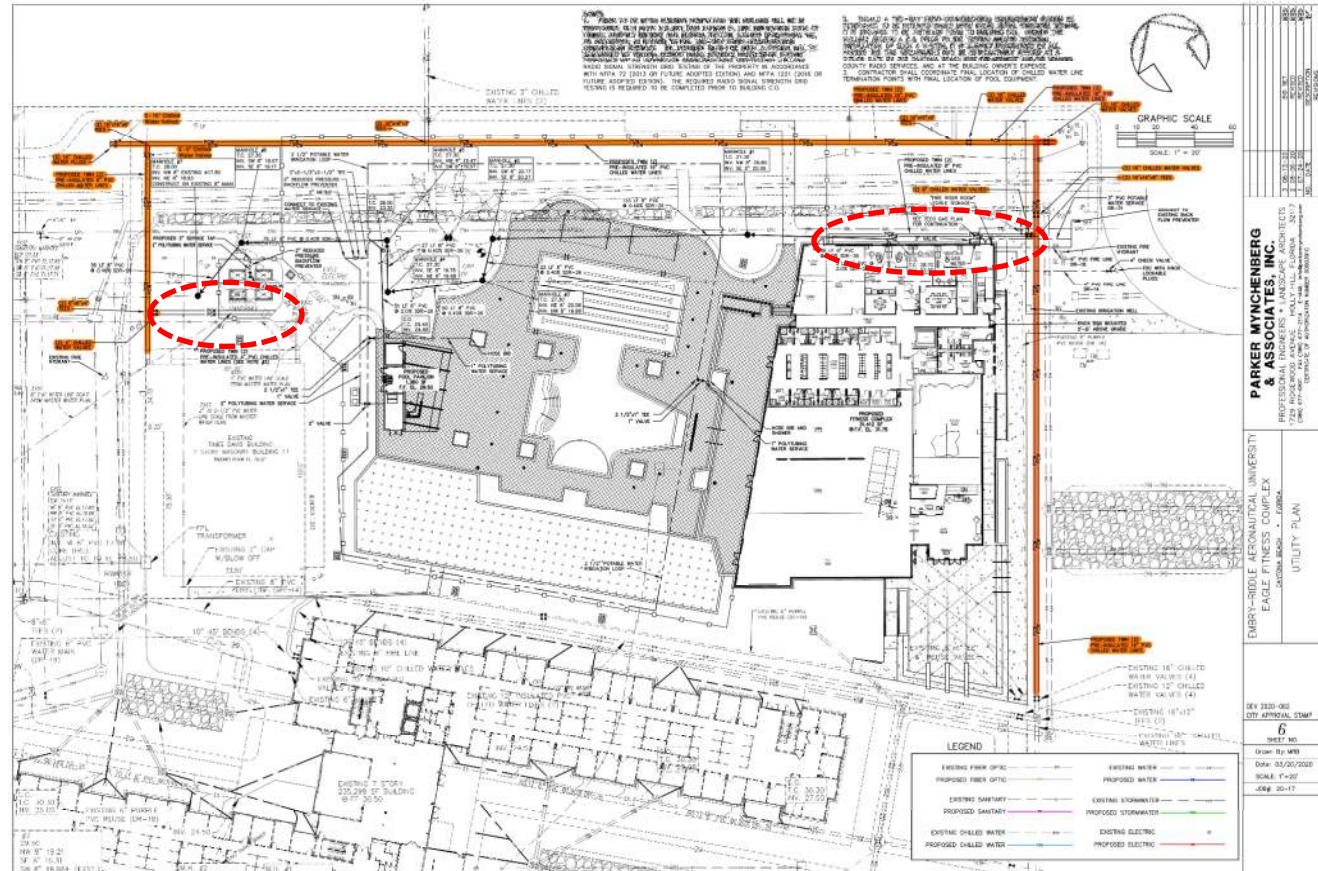


# Project Overview

## Site Utilities

### Chilled Water Loop

- Orange highlighted CW lines **not** in your scope of work
- Include CW tie-ins to buildings from CW loop in your Bid



# Project Overview

## Floor Plans

### First Floor: 19,308sf

- Rock Wall & Bouldering Wall
- Open Fitness Areas
- Locker Rooms
- Office Suite
- Monumental Recreation/Egress Stair

### Second Floor: 12,104sf

- Open Fitness Areas
- 3 Studio Spaces
- Stretch Lounge
- Balcony

### Total Building: 31,412sf

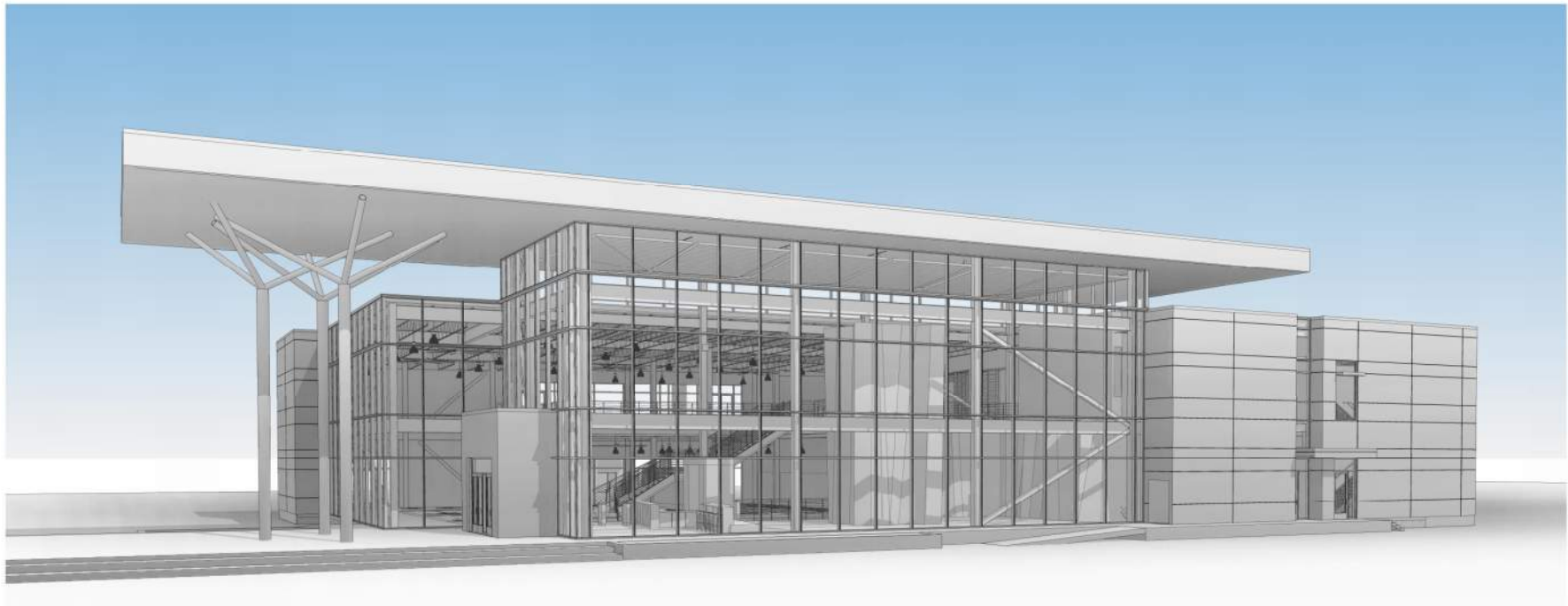


## Project Overview



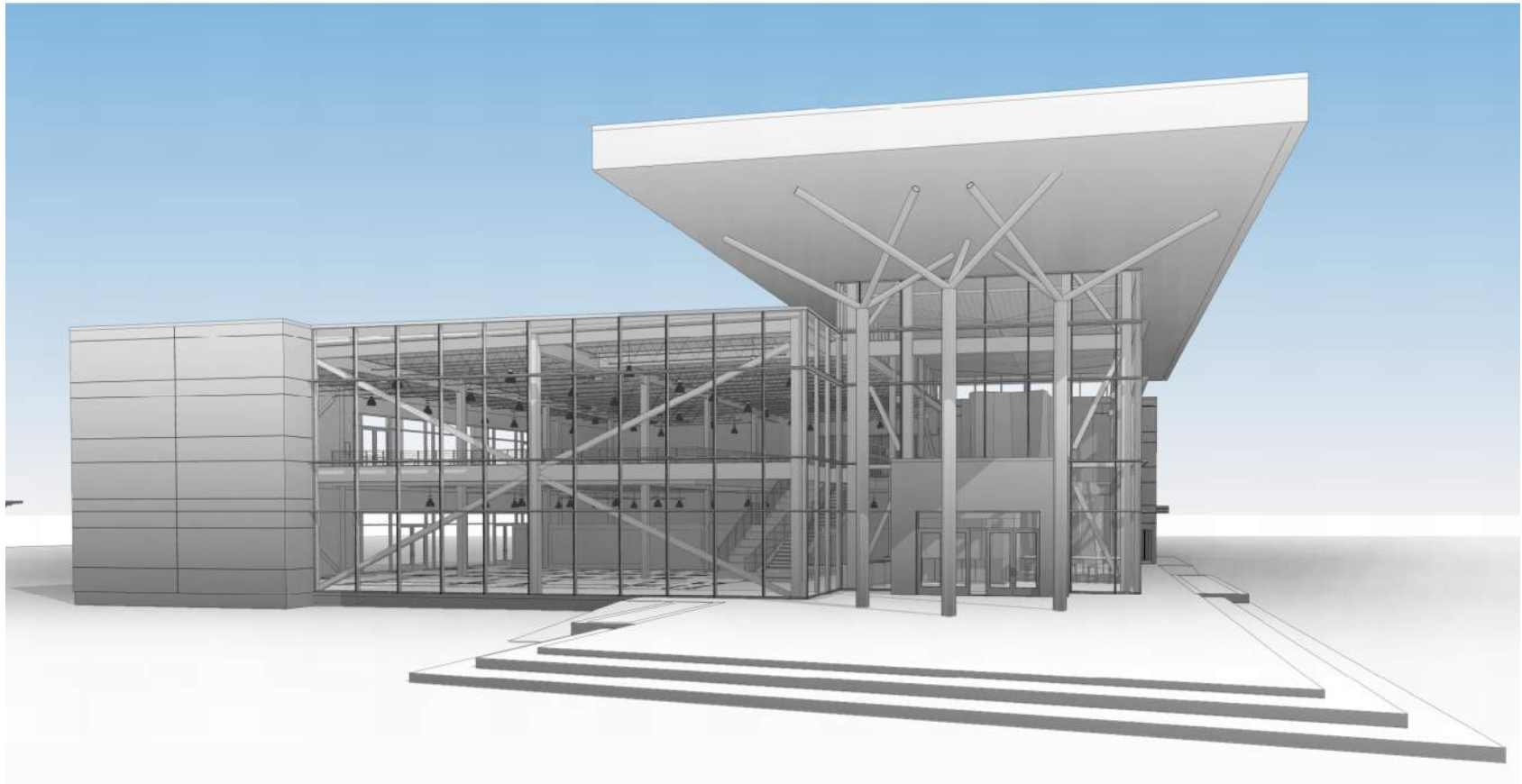
## Project Overview

---



## Project Overview

---



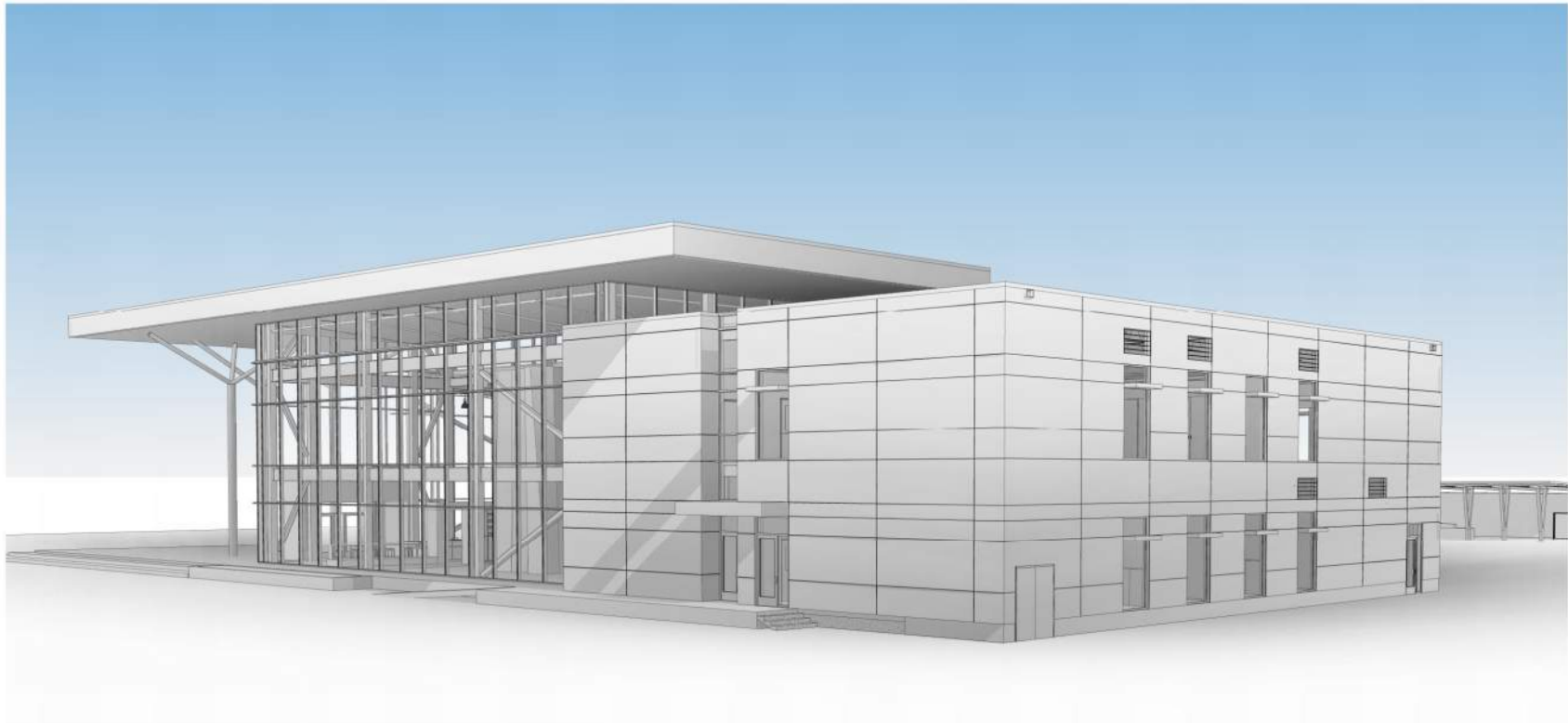
## Project Overview

---



## Project Overview

---



## Project Overview





# Schedule

---

### Project Schedule

#### Site Plan Approval:

- City Planning Board – 8/26

#### Building Permit Submission:

- Submit for Building Permit – 8/27

#### Bid Phase:

- Drawings Distributed – 8/14
- Pre Bid Meeting – 8/21
- Final Date Pre-Bid RFIs – 9/7
- BIDS DUE – 9/15 2pm

#### Demolition Complete:

- September 2020

#### Start Construction:

- October 2020

#### Construction Complete:

- July 2021



# Bid Process

---

# Bid Process

## Bid Process

### Documents:

- Issue for Permit – Drawings
- Issue for Permit – Project Manual
  - Threshold Inspection Plan
- Bid Set Civil - Drawings

### Pre-Bid RFIs:

- Email all RFIs to Houseman Architecture
- Consolidate RFIs into single WORD document
- Responses will be distributed to all teams once per week

### Bid Form:

- Goal for Bid Form = 'Apples to Apples'
- Please be specific as possible
- List any alternates or substitutions below the Grand Total
- List any allowances

### Embry-Riddle Aeronautical University Eagle Fitness Complex Project

#### BID FORM

CONTRACTOR: Name of Contractor

Total Square Feet of New Construction: 31,412

ERAU Eagle Fitness Complex		
SITE WORK		
Fill and Grading / Soil Erosion Prevention & Sedimentation	\$	--
Site Utilities - Chilled Water, Gas, Water and Sewer	\$	--
Hardscape - pavers, sidewalks, ramps & raised podium	\$	--
Landscaping and Irrigation	\$	--
Artificial Turf - exterior	\$	--
Pool Heating/Cooling System - provide details	\$	--
Pool Paving	\$	--
Site Retaining Walls	\$	--
Fencing around Pool Area - provide details	\$	--
Pool Shade Structures, Benches, ADA Equipment, Pool Accessories	\$	--
<b>SUBTOTAL</b>	<b>\$</b>	<b>--</b>
BUILDING		
Div. 2 Demolition - existing pool and pool deck	\$	--
Div. 3 Concrete	\$	--
Div. 4 Masonry	\$	--
Div. 5 Metals	\$	--
Structural Steel	\$	--
Aluminum/Steel/Plastic/Composite Metals - stairs, structural steel, railings, ladder	\$	--
Div. 6 Wood, Plastics and Composites	\$	--
Cabinets, Reception Desk, Lounge, Cubicles	\$	--
Div. 7 Thermal and Moisture Protection	\$	--
Roofing Systems	\$	--
Aluminum Composite Metal Wall and Soffit Panels	\$	--
Division 8 Drywall, Gypsum Board, Acoustic Panels	\$	--
Div. 8 Openings - Doors, Frames and Hardware	\$	--
Curtain Wall, Storefront and Entrances	\$	--
Glazing	\$	--
Insulation	\$	--
Div. 9 Finishes	\$	--
Interior Metal Framing & Dividers, Shelving	\$	--
Trim	\$	--
Acoustical Panel Ceiling	\$	--
Wood Ceiling Panels	\$	--
Wood Athletic Flooring	\$	--
Radiant Heating and Base	\$	--
Athletic Flooring	\$	--
Artificial Turf - Interior	\$	--
Carpeting	\$	--
Painting	\$	--
High Performance Coatings	\$	--
Sound Control Above Office Suite	\$	--
Acoustical Panels	\$	--
Div. 10 Specialties	\$	--
Fire Partitions & Cabinets	\$	--
Token Partitions	\$	--
Lockers	\$	--
Div. 11 Equipment	\$	--
Div. 12 Furnishings	\$	--
Public Seating	\$	--
Div. 13 Special Construction	\$	--
Rock Walls	\$	--
Reclining Wall	\$	--
Provided Impact Flooring	\$	--
Div. 14 Elevator - specify	\$	--
Div. 15 Fire Suppression	\$	--
Div. 16 Plumbing	\$	--
Plumbing Fixtures - provide details	\$	--
Div. 17 Mechanical	\$	--
Equipment - provide details	\$	--
Controls - provide details	\$	--
Div. 18 Electrical	\$	--
Interior Lighting	\$	--
Control Systems	\$	--
Div. 19 Electronic Safety and Security	\$	--
Access Control	\$	--
Termite Control	\$	--
<b>SUBTOTAL</b>	<b>\$</b>	<b>--</b>

ADDITIONAL ITEMS		
Subcontractor Default Insurance / Subcontractor Bond	\$	--
General Conditions/Setting & Entry Facilities	\$	--
Builder Risk Commercial	\$	--
General Liability Insurance	\$	--
DMF	\$	--
Construction Contingency - identify percentage	\$	--
Florida Tax on Contract	\$	--
City of Daytona Beach Permit Fees	\$	--
City of Daytona Beach Impact Fees	\$	--
Payment & Performance Bonds	\$	--
Additional Items (include detailed description)	\$	--
<b>SUBTOTAL</b>	<b>\$</b>	<b>--</b>
<b>GRAND TOTAL</b>	<b>\$</b>	<b>--</b>
Construction Cost PDF	\$	--

ALTERNATES / QUALIFICATIONS		
SEE PROJECT MANUAL FOR ALTERNATES		
1. Finished Concrete in lieu of Terrazzo	\$	--
2. Aluminum Composite Wall Panels in lieu of Stone	\$	--
3. Light Metal Siding in lieu of Acoustical Panels	\$	--
4. Deckle-Mounted Roller Shades	\$	--
<b>SUBTOTAL</b>	<b>\$</b>	<b>--</b>

ALLOWANCES		
CLARIFY ANY ALLOWANCES BEING CARRIED IN YOUR BID ABOVE		
	\$	--
	\$	--
	\$	--
<b>SUBTOTAL</b>	<b>\$</b>	<b>--</b>

SCHEDULE		
Number of Calendar Days until Substantial Completion	XXX	
Proposed Substantial Completion Date	XXX	
Proposed Completion Date	XXX	

SUBCONTRACTORS		
Site Work	person list out	
Hardscape	person list out	
Landscaping	person list out	
Electrical	person list out	
PLUMB	person list out	
Mechanical/Plumbing	person list out	
Fire Protection	person list out	
Gravel	person list out	
Pool Sprinkler	person list out	
Painting	person list out	
Roofing	person list out	
Roof & Wall Panels	person list out	
Erection	person list out	
Carpentry	person list out	
Steel	person list out	
Refrigerating	person list out	
Glass	person list out	
Concrete	person list out	

CLARIFICATIONS		

SIGNATURE		
Please provide signature below confirming that the Grand Total bid number provided is based upon the drawings & specifications provided without any exclusions not listed above.		
Name: _____	Date: _____	

Questions?

---

Chris Hardesty  
Missy Stokke  
Mike Houseman

[harded0c@erau.edu](mailto:harded0c@erau.edu)  
[stokkem@erau.edu](mailto:stokkem@erau.edu)  
[mikeh@housemanarchitecture.com](mailto:mikeh@housemanarchitecture.com)

Thank you

